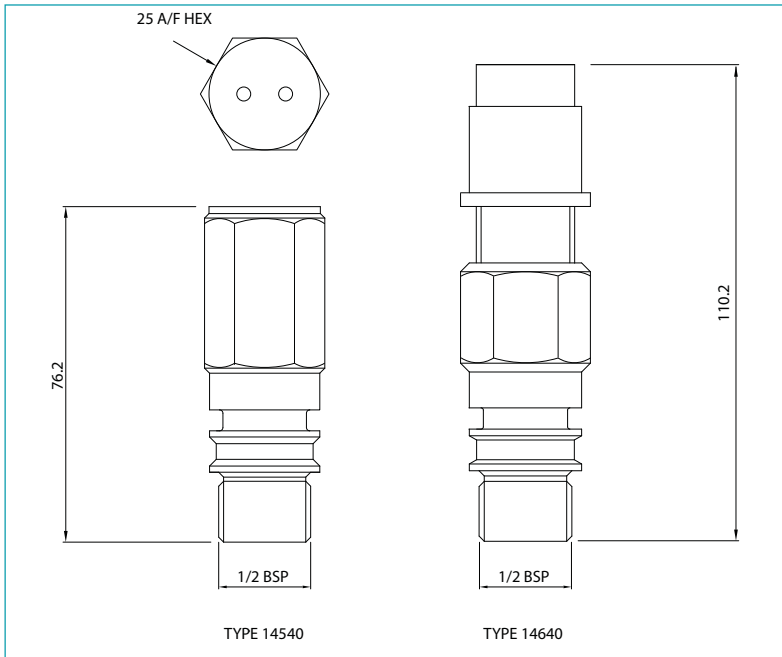


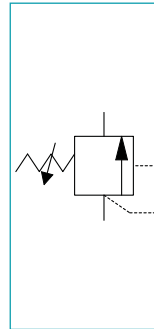
Hydraulic Service



Semi-Capsule Relief Valves



SCHEMATIC



Features and Benefits

- Set Point Repeatability $\pm 2\%$.
- Set Point Range - user specified up to 800 bar.
- Sealing Re-Seat Pressure - Virtually zero leakage re-seat pressure $\geq 90\%$ of cracking pressure.
- Orifice Size: \varnothing 4mm.
- Back Pressure - set point is not affected by vent back pressure. Maximum permissible back pressure 100 bar.
- Operating Media - mineral oils, water glycol fluids and some chemicals. Consult Bifold Marshalsea for specific chemicals and synthetic oils compatibility.
- Long Life and Repeatable Performance - are ensured through the use of hardened elements.

Materials

External & Wetted Parts	- 316L stainless steel		
Seal Material	- Nitrile	- standard	
	- Viton	- add suffix M089	eg. I4540 - 08 - M089
	- Silicone	- add suffix M065	eg. I4540 - 08 - M065
	- Low Temp Nitrile	- add suffix M106	eg. I4540 - 08 - M106

Approvals Details



These relief valves conform to European Directive 94/9/EC relating to equipment intended for use in potentially explosive atmospheres and are ATEX compliant. These valves also conform to the Pressure Equipment Directive 97/23/EC. All valves are CE marked and supplied with a test certificate plus a declaration of conformity.

Accuracy of information
We take care to ensure that product information in this catalogue is reasonably accurate and up-to-date. However, our products are continually developed and updated so to ensure accurate and up-to-date information please refer to the product catalogue issue list on our web site or contact a member of our sales team.

When selecting a product, the applicable operating system design must be considered to ensure safe use. The products function, material compatibility, adequate ratings, correct installation, operation and maintenance are the responsibilities of the system designer and user.

Quality Assurance
All Bifold products are manufactured to a most stringent QA programme to ensure that every product will give optimum performance and reliability. We are third party certified to BS EN ISO 9001:2008. Functional test certificates, letter of conformity and copies of original mill certificates, providing total traceability are available on request, to BS EN 10204 3.1 where available. We reserve the right to make changes to the specifications and design etc., without prior notice.

Hydraulic Service



Product Description

The Type I4540 and I4640 relief valves have been designed primarily to provide pressure control in systems with low flow requirements such as those subject to thermal expansion.

The valve is designed for cartridge fitment into a suitable manifold block or the valve can be face mounted to relieve to atmosphere such as in a tank or sump application.

The relief valve I4540 weight is 0.23 Kg.

The relief valve I4640 weight is 0.31 Kg.

Selection Chart - Ordering Example

SEMI-CAPSULE RELIEF VALVE I4540 AND I4640 SPECIFICATIONS				
Part Number	Pressure Range (bar)	Outlet Connection	Seat Material	Repair Kit
I4540 - 02	35 - 345	Cartridge	Nitrile	RS I4540 - 02
I4540 - 04	35 - 345	Cartridge	Viton	RS I4540 - 04
I4540 - 03	345 - 800	Cartridge	Viton	RS I4540 - 03
I4540 - 06	345 - 800	Cartridge	Nitrile	RS I4540 - 06
I4640 - 01	100 - 400	Cartridge	Viton	RS I4640 - 01
I4640 - 02	400 - 700	Cartridge	Viton	RS I4640 - 02

It is the responsibility of the system designer and user to select products that are suitable for their intended application of use.