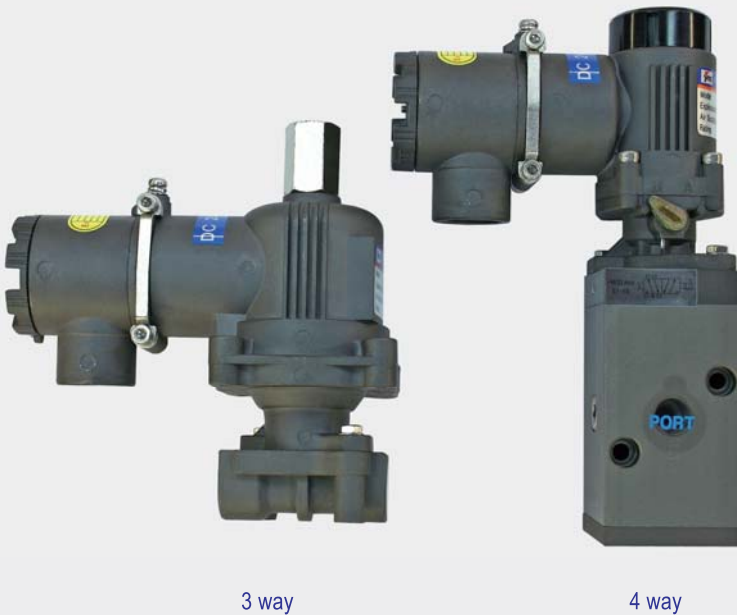


Solenoid Valve YT-700

Product Number: YT-700 ■ ■ ■ ■ (specify your requirement)

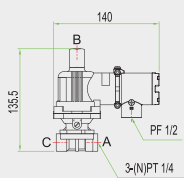
Model	Valve Type	Connection Type	Power Source	Pressure
YT-700	S 3way	P PT	1 AC 110V	1 0~0.4Mpa (3way)
	D 4way	N NPT	2 AC 220V	2 0~0.7Mpa (3way)
			3 DC 24V	3 0.1~1Mpa (4way)



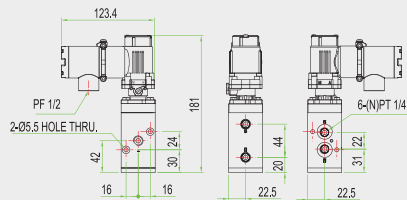
3 way

4 way

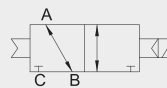
Item · Type	YT-700		
	3 way	4 way	
Max. Supply Pressure	0~0.4MPa 0~0.7MPa	0.1~1MPa	
Flow Capacity (Cv)	Output 0.2(φ3)at 0.4MPa 0.084(φ1.6)at 0.7MPa	0.75	
	Exhaust		0.093 N/A
Rating Current	AC 220V	60mA (11w)	30mA(6.6w)
	AC 110V	130mA (12w)	50mA(5.5w)
	DC 24V	580mA (14w)	160mA (3.8w)
Frequency	50~60Hz		
Explosion Proof type	Ex d IIC T6		
Connection Type	PT (NPT) 1/4		
Conduit	PF 1/2 (G1/2)		
Coil Insulation Grade	Class E		
Ambient Temp.	Standard	-20~70 °C (-4~158°F)	
	Explosion	-20~50 °C (-4~122°F)	
Weight	0.8kg (1.8lb)	0.9kg (2.0lb)	



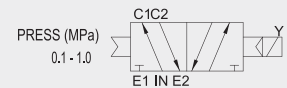
YT-700S (3WAY)



YT-700D (4WAY)



YT-700S (3WAY)



YT-700D (4WAY)

Solenoid valve YT-700 opens and shuts by electrical signal of AC or DC, It is built as explosion-proof structure.

- O-ring shapes: less lubrication required
- Balance spool type: no require of backing spring
- Interchangeable of AC and DC coils
- Manual override switch