

5205

TENSION LOAD CELL

Tension force transducer.

Model 5205 - 10 t



Features

- Sturdy design
- Material: Nickel plated steel (also available in stainless steel)
- Protection IP 66
- Cable length: See drawing's table (CL)
- Most important available options:
 - o ATEX intrinsic safety Ex II 1GD Ex ia IIC T6 or T4 Ga Ex ia IIIC T80 C Da
 - o Amplified output signal (0..10 V, 4..20 mA)
 - o Digital output signal (RS-232C, RS-485, USB, ...)
 - o Hoist version

Applications

The SENSY's load cell 5205 is perfectly designed to the following applications :

- Tension force measurement
- Suspended industrial weighing

Capacities

5205 : 20 - 50 - 100 - 200 - 300 - 500 - 1000 - 2000 kN

Specifications	0.5	
Linearity error	< ± 0.5	% F.S.
Repeatability error	< ± 0.25	% F.S.
Creep error over 30 min.	< ± 0.2	% F.S.
Zero shift after loading	< ± 0.1	% F.S.
Reference temperature	23	C
Nominal temperature range	-10...+45	C
Service temperature range	-30...+70	C
Storage temperature range	-50...+85	C
Temperature coefficient of the sensitivity	< ± 0.1	% F.S./10 C
Temperature coefficient of zero signal	< ± 0.1	% F.S./10 C
Zero balance	± 0.02	mV/V
Input resistance	352 ± 2	Ohm
Output resistance	352 ± 2	Ohm
Insulation resistance (50V)	> 5000	Megaohm
Reference excitation voltage	10	VDC
Nominal range of excitation voltage	3..12	VDC
Safe load limit	150	% F.S.
Breaking load	> 300	% F.S.

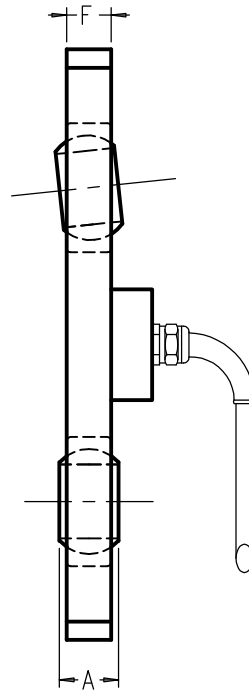
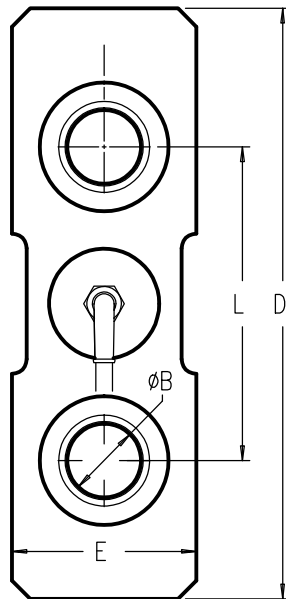
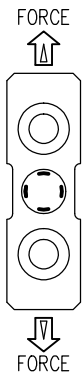
F.S.: full scale - Specifications subject to change without notice

LOAD CELL

model 5205 alloy steel
TENSION LOAD CELL

Range 20 - 500 kN IP 66
(2 - 50t.)

Cable length : See table (CL)
Sensitivity ± 1.5 mV/V



CAPACITIES	A	ØB	L	D	E	F	Dynamic use	CL	Weight
20 kN	14	17	120	180	±50	10	15 kN	3 m.	0.7 kg
50 kN	16	20	130	200	±70	12	30 kN		1.2 kg
100 kN	20	25	190	280	±80	16	50 kN	6 m.	2.8 kg
200 kN	25	35	285	395	±100	20	100 kN		5.8 kg
300 kN	32	45	310	450	±120	25	150 kN		9.5 kg
500 kN	44	60	320	500	±180	40	250 kN		25 kg

Other dimensions on request

