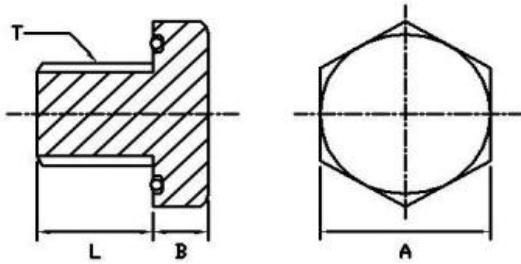


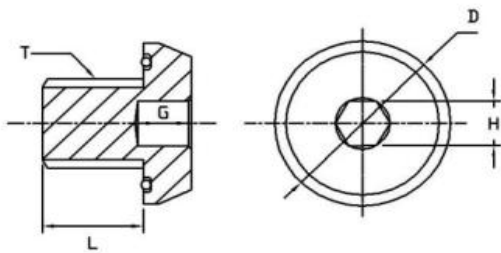
STOPPING PLUGS

Stopping plugs are used to blank off entries into housings and enclosures while maintaining Explosion proof certifications. Hexagonal Head and Domed head Stopping plugs, having metric threads are provided with 'O' ring provision to enhance ingress protection.

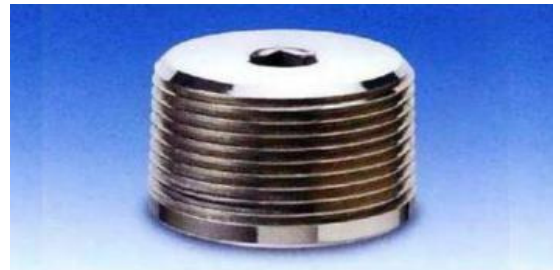
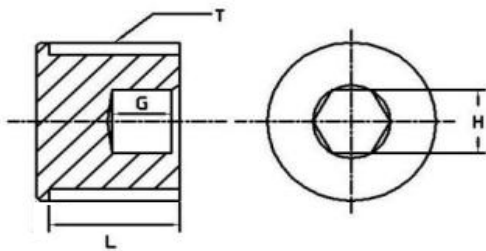
IME MODEL 86, HEXAGONAL HEAD PLUG



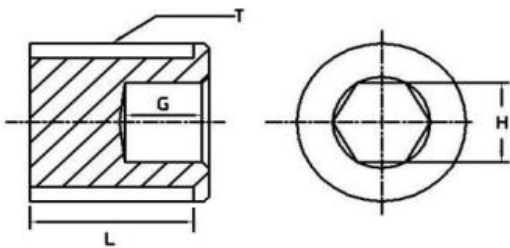
IME MODEL 87, EXTERNALLY ACCESSIBLE DOME PLUG



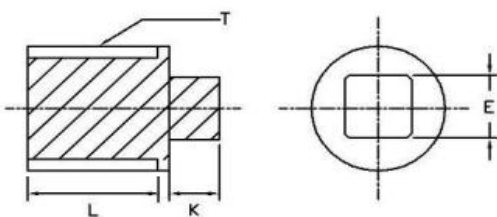
IME MODEL 88, INTERNALLY ACCESSIBLE PLUG



IME MODEL 89, EXTERNALLY ACCESSIBLE PLUG



IME MODEL 83, SQUARE HEAD PLUG



STOPPING PLUGS

DIMENSIONAL DETAILS

CODE	"T"	"L"	"B"	"H"	"A"	"D"	"E"	"G"	"K"
11	M16 x 1.5	0.59(15)	0.31(8)	0.31(8)	1.00(25)	1.00(25)	0.39(10)	0.31(8)	0.24(6)
12	M20 x 1.5	0.59(15)	0.31(8)	0.39(10)	1.18(30)	1.18(30)	0.47(12)	0.39(10)	0.24(6)
13	M25 x 1.5	0.67(17)	0.31(8)	0.47(12)	1.38(35)	1.38(35)	0.63(16)	0.47(12)	0.24(6)
19	1/2" NPT	0.67(17)	0.31(8)	0.39(10)	1.00(25)	1.00(25)	0.47(12)	0.39(10)	0.24(6)
20	3/4" NPT	0.71(18)	0.39(10)	0.47(12)	1.38(35)	1.38(35)	0.63(16)	0.47(12)	0.24(6)
21	1" NPT	0.89(22.5)	0.39(10)	0.55(14)	1.57(40)	1.57(40)	0.71(18)	0.55(14)	0.24(6)

Dimensions may vary from the above table depending on the material availability.
All dimensions are in inches (mm).

ORDERING INFORMATION

Model	Description																						
83	Square Head Plug																						
86	Hexagonal Head Stopping Plug																						
87	Dome Head Stopping Plug																						
88	Internally Accessible Stopping Plug																						
89	Externally Accessible Stopping Plug																						
	<table border="1"> <thead> <tr> <th>Code</th> <th>Material of Construction</th> </tr> </thead> <tbody> <tr> <td>T</td> <td>Stainless Steel 316</td> </tr> <tr> <th>Code</th> <th>Size and Type of Thread</th> </tr> <tr> <td>11</td> <td>M16 x 1.5</td> </tr> <tr> <td>12</td> <td>M20 x 1.5</td> </tr> <tr> <td>13</td> <td>M25 x 1.5</td> </tr> <tr> <td>19</td> <td>1/2" NPT</td> </tr> <tr> <td>20</td> <td>3/4" NPT</td> </tr> <tr> <td>21</td> <td>1" NPT</td> </tr> <tr> <th>Code</th> <th>Certifications</th> </tr> <tr> <td>M</td> <td>FM (US & CANADA), ATEX & IECEX</td> </tr> </tbody> </table>	Code	Material of Construction	T	Stainless Steel 316	Code	Size and Type of Thread	11	M16 x 1.5	12	M20 x 1.5	13	M25 x 1.5	19	1/2" NPT	20	3/4" NPT	21	1" NPT	Code	Certifications	M	FM (US & CANADA), ATEX & IECEX
Code	Material of Construction																						
T	Stainless Steel 316																						
Code	Size and Type of Thread																						
11	M16 x 1.5																						
12	M20 x 1.5																						
13	M25 x 1.5																						
19	1/2" NPT																						
20	3/4" NPT																						
21	1" NPT																						
Code	Certifications																						
M	FM (US & CANADA), ATEX & IECEX																						
89	T 12 M ← Typical Model Number																						

CERTIFICATIONS

