

2052

SINGLE POINT LOAD CELL " OFF CENTER "

Small sized single point load cell.

Model 2052



Features

- Designed for off-center load
- Maximum platform size : 250x250 / 400x400 mm (according to capacity)
- Small sized
- Material : anodized aluminium alloy
- Protection: IP 54
- Cable length: See drawing
- Easy to install
- Available options (non exhaustive list) :
 - o ATEX intrinsic safety Ex II 1GD Ex ia IIC T6 or T4 Ga Ex ia IIIC T80 C Da

Applications

The SENSY's load cell 2052 is perfectly designed to the following applications :

- Bench scales
- Small hopper weighing
- Filling, packaging and batching applications

Capacities

3 .. 200 kg

Specifications	A3	0.03	
Accuracy class	3000 d *	0.03% F.S.	-
Combined error	< ± 0.03	< ± 0.03	% F.S.
Linearity error	< ± 0.025	< ± 0.025	% F.S.
Repeatability error	< ± 0.015	< ± 0.015	% F.S.
Creep error over 30 min.	< ± 0.03	< ± 0.025	% F.S.
Zero shift after loading	< ± 0.0075	< ± 0.0075	% F.S.
Reference temperature	23	23	C
Nominal temperature range	-10...+45	-10...+45	C
Service temperature range	-30...+70	-30...+70	C
Storage temperature range	-50...+85	-50...+85	C
Temperature coefficient of the sensitivity	< ± 0.1	< ± 0.015	% F.S./10 C
Temperature coefficient of zero signal	< ± 0.05	< ± 0.023	% F.S./10 C
Zero balance	± 0.02	± 0.02	mV/V
Sensitivity tolerance	< ± 0.2	< ± 0.2	%
Input resistance	352 ± 2	352 ± 2	Ohm
Output resistance	352 ± 2	352 ± 2	Ohm
Insulation resistance (50V)	> 5000	> 5000	Megaohm
Reference excitation voltage	10	10	VDC
Nominal range of excitation voltage	3..12	3..12	VDC
Nominal sensitivity	1.6...2.7	1.6...2.7	mV/V
Safe load limit	150	150	% F.S.
Breaking load	>300	>300	% F.S.
Static lateral force limit	100	100	% F.S.
Permissible dynamic loading	60	60	% F.S.

F.S.: full scale - Specifications subject to change without notice

* : Except thermal drifts

LOAD CELL

model 2052K aluminium alloy

OFF-CENTER

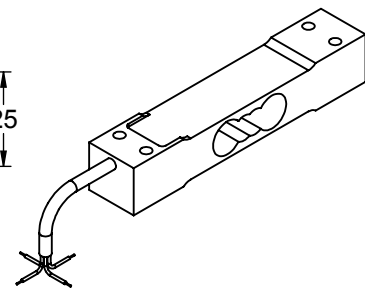
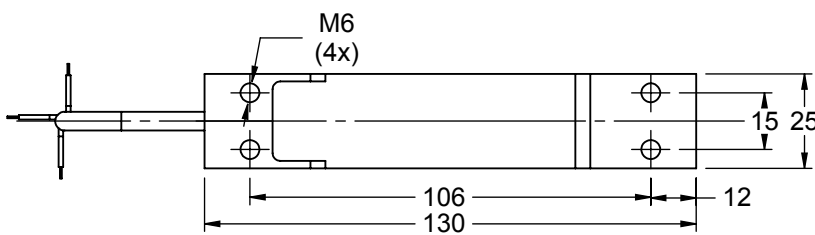
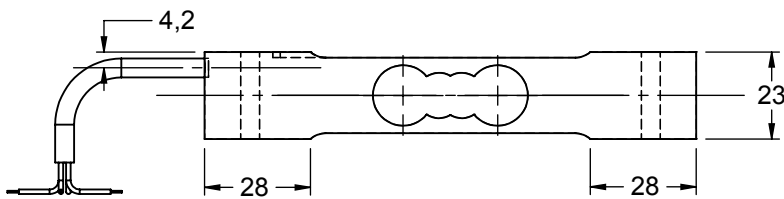
Range 3 - 200 kg IP 63

3 - 45 kg

Cable length : 0.5 m

Weight : 0.15 kg

Max. platform size :
250 x 250 mm

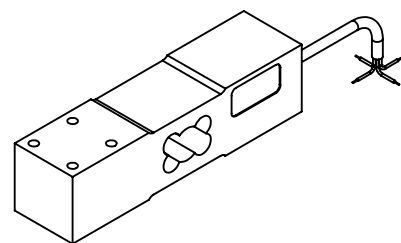
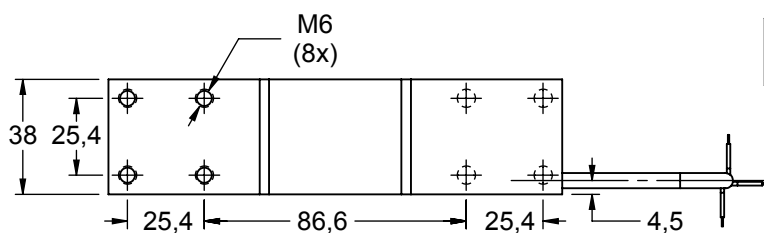
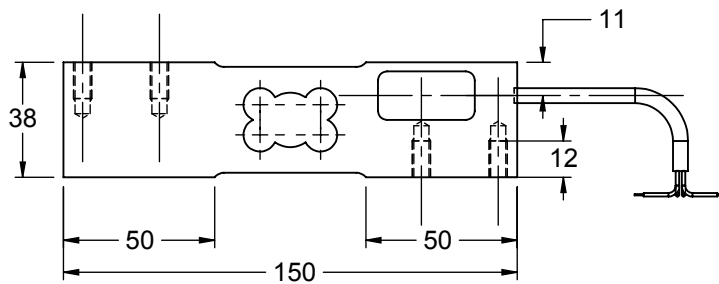


50 - 200 kg

Cable length : 1.5 m

Weight : 0.52 kg

Max. platform size :
400 x 400 mm



4 wires: Exc+ (Red), Exc- (Black), Sig+ (Green), Sig- (White)



Torque :
10 N/m