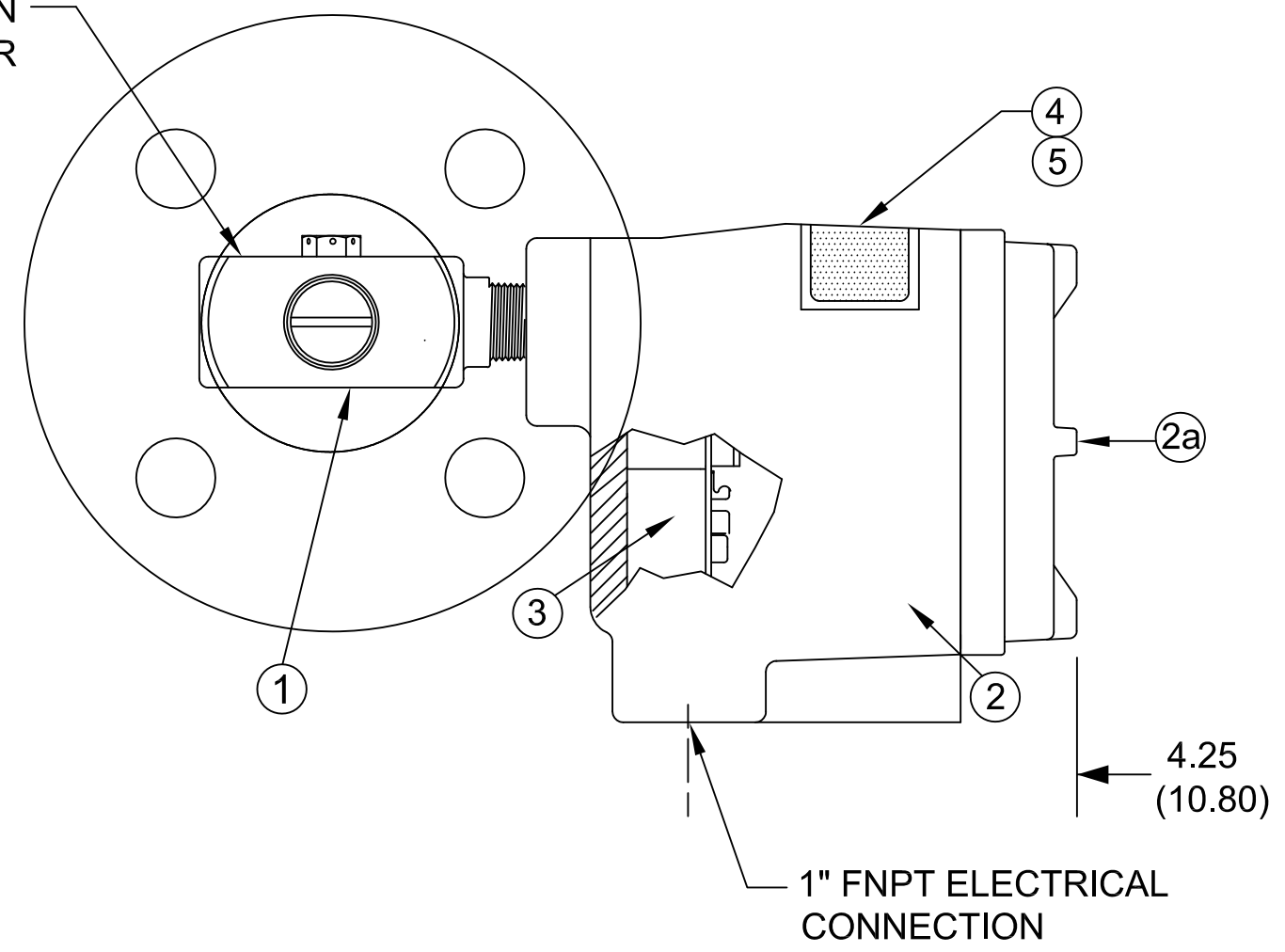


FLOW  
DIRECTION  
INDICATOR



**NOTES:**

- ① Flange
- ② Customer specified 'A' length

Information contained in this document is confidential and proprietary information of Telematic Controls Inc. This document may not be reproduced or distributed for any reason without express written permission of Telematic Controls Inc. All rights of design, invention and copyright are reserved.

Rev	Description	App.	Date
0	Initial release	Chidley	16Jul02
1	Edited text and dims		25Jan11
2	Changed footer note. Added confidential note. Modified Title box & Rev. Table	TDH	04Jun13

APPROVALS		DATE	
DRN	MW	15MAY13	
CHKD	EC	23MAY13	
APP	TDH	04Jun13	
All dimensions are shown in inches with cm shown in brackets  TOLERANCES ARE: DECIMALS                      ANGLES .X ± 0.1                              ±0.5° .XX ± 0.02 .XXX ± 0.007			TITLE <b>CLASSIC 832 Series</b> <b>Flanged InLine</b> <b>Horizontal with Bleed Port</b> <b>Local Electronics</b>
SIZE A3	DWG NO. <b>D15-832-RA3-XXXXX-AH-0</b>		REV <b>2</b>
SCALE NTS			SHEET 1 OF 2

