

2/2 WAY PILOT OPERATED VALVE WITH ASSISTED LIFT, G 1/4" ÷ G 1/2"

COMMON FEATURES

Media: water, oil, air

Media temperature: $-10^{\circ}\text{C} \div +130^{\circ}\text{C}$

Ambient temperature: $-10^{\circ}\text{C} \div +50^{\circ}\text{C}$

Body material: brass (CW617N EN 12165)

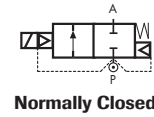
Operator material: stainless steel

Operator seal material: FKM

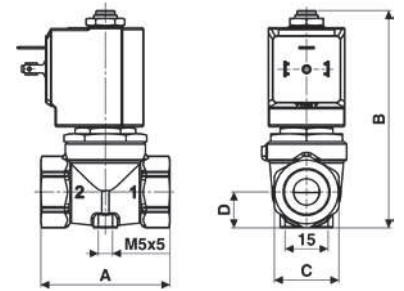
Main seal and diaphragm material: FKM

Protection class: IP 65 (with connector and gasket)

TYPE: D884/885/886



DIMENSIONS & WEIGHTS		D884	D885	D886
G connection	[ISO 228]	1/4"	3/8"	1/2"
A	[mm]	54	54	54
B	[mm]	89	89	89
C	[mm]	Hex 27	Hex 27	Hex 27
D	[mm]	15	15	15
weight	[kg]	0.45	0.4	0.4



Flow direction overseat 1 → 2

VALVE	nominal Ø	flow rate Kvs	OPD			COILS	
			min. [barg]	max. AC [barg]	max. DC [barg]	code	[Volts/Hz]
code	[mm]	[l/min]	[barg]	[barg]	[barg]	code	[Volts/Hz]
D884DVU	10.5	21	0	16	6	7250	24v DC
D885DVU	10.5	24	0	16	6	7200	24v 50/60Hz
D886DVU	10.5	25	0	16	6	7400	110v 50Hz - 120v 60Hz
						7600	200v 50Hz - 220v 60Hz
						7700	230v 50Hz - 240v 60Hz

D884/885/886 - FKM seal, NC -

Coil power: AC 18v_A (holding)
AC 36v_A (inrush)
DC 14w

