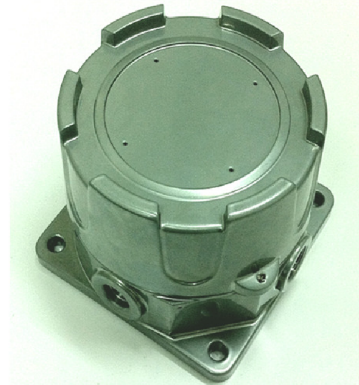


INTERNATIONAL METAL ENGINEERING

MODEL 5092 TERMINAL ENCLOSURE

- EXPLOSION PROOF CERTIFIED
- EQUIPMENT CERTIFIED
- CHOICE OF SS316 AND COPPER-FREE ALUMINUM
- CHOICE OF TEMPERED GLASS COVER OR BLIND COVER
- WIDE SELECTION OF CONDUIT SIZES
- OPTION FOR A CUSTOMIZED SS NAMEPLATE



Introduction

Material of Construction:

SS316 and Copper-Free Aluminum

Certification:

ATEX & IECEx

Connections

1/2" NPT, 3/4" NPT, M20x1.5, 1/2" BSP, M25x1.5

Mounting Holes

As per requirement

Surface Finishing

Electro Polish For Stainless Steel

Epoxy Painted For Aluminum

"O" Ring

Buna "N"

Weight

2.2 Kg (4.9 lbs) for Aluminum;

2.75Kg (6 lbs) for SS316

Accessories

Customized SS Nameplate

Certification System

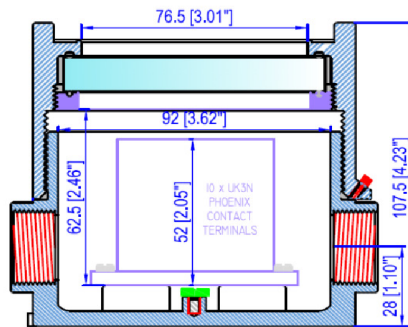


II 2 G D
Ex d IIC T6 Gb
Ex tb IIIC T85°C Gb IP66
Ta = -40°C to +70°C

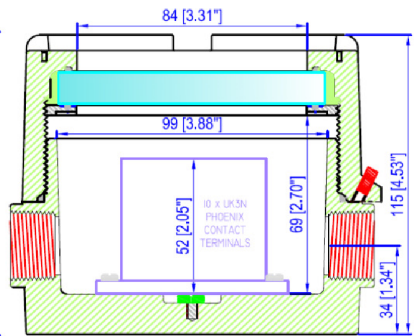


Ex d IIC T6 Gb
Ex tb IIIC T85°C Gb IP66
Ta = -40°C to +70°C

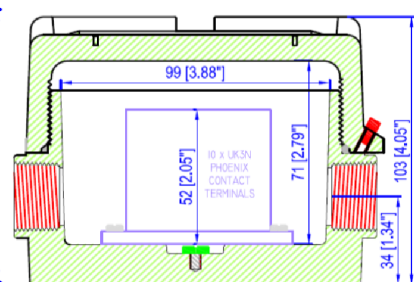
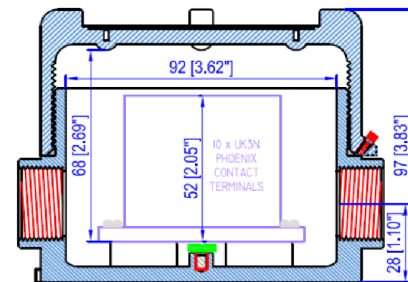
Dimensions For Stainless Steel



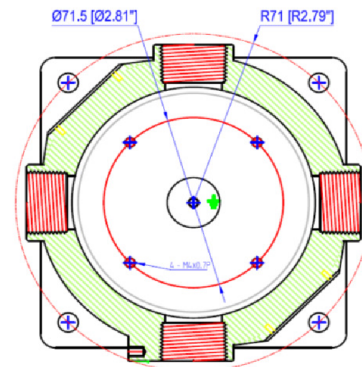
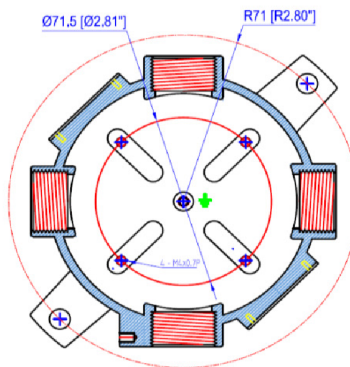
Dimensions For Aluminum



CROSS SECTION WITH GLASS COVER



CROSS SECTION WITH BLIND COVER



MOUNTING HOLES VIEW

INTERNATIONAL METAL ENGINEERING

Ordering Information for 5092 Terminal Enclosure

Model	Description			
5092	5092 Junction Box with Terminal block installed			
	Code	Certification Details		
	SN	Stainless Steel Junction Box With Tempered Glass Cover, General Purpose		
	ST	Stainless Steel Junction Box With Tempered Glass Cover, ATEX & IECEx Explosion Proof Certified, IP66		
	TN	Stainless Steel Junction Box With Blind Cover, General Purpose		
	TT	Stainless Steel Junction Box With Blind Cover, ATEX & IECEx Explosion Proof Certified, IP66		
	WN	Copper-Free Aluminum Junction Box With Tempered Glass Cover, General Purpose		
	WT	Copper-Free Aluminum Junction Box With Tempered Glass Cover, ATEX & IECEx Explosion Proof Certified, IP66		
	AN	Copper-Free Aluminum Junction Box With Blind Cover, General Purpose		
	AT	Copper-Free Aluminum Junction Box With Blind Cover, ATEX & IECEx Explosion Proof Certified, IP66		
	Code	Entries Description		
	00	1 Entry only		
	01	2 Entries at 180 Degree		
	02	2 Entries at 90 Degree		
	03	3 Entries		
	04	4 Entries		
	Code	Conduit Entry		
	05	1/2" NPT		
	07	3/4" NPT		
	18	None		
	22	M20 x 1.5P (SEE NOTE 1)		
	23	1/2" BSP		
	24	T1 & T3: 3/4" NPT; T2 & T4: M20 x 1.5 (SEE NOTE 1)		
	25	M25 x 1.5P (SEE NOTE 1)		
5092	ST	04	07	← Typical Model Number

Note:

1. A temporary metric label is required when an M20 x 1.5P and M25x1.5P threads are selected.

Details of Entries Configuration

