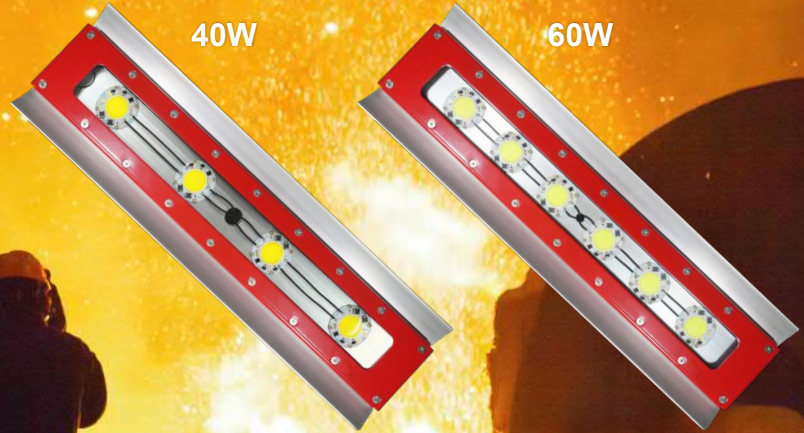


L1319C

40W

60W



Net Weight: 6.8 kg (15.0 lb)



Over 1000 hours
of operation at
100 °C ambient
temperature



High Humidity & Heat Resistant LED Light

- ★ AC LED Driver-less Technology
- ★ Intended for Use in High Ambient Temperature Environments

High Ambient Temperature:
+65°C ~ +100°C (+149°F ~ +212°F)



Applications:

- Pulp & Paper (Cooking and Drying Area)
- Glass Factory (Processing Area)
- Metal Forging or Metal Recycling Plant (Heating or Forging Area)
- Oil & Gas (Furnace Towers or Compressor Rooms)
- Garbage Processing Plant (Burning Area)
- Coal Power Plant (Burning Area)
- Gas Turbine Power Plant (Gas Turbine Area)
- Painting Factory (Drying Area)
- Winery (Distillation Chamber)
- Textile (Dyeing and Finishing Area)
- Food Process (Heating, Cooking or Baking Area)

Standards:

UL 844
UL 1598
UL 8750
IEC 60079
EN 60079
CSA C22.2 No.250.0

Protection:

IP67

Electrical:

| | | |
|-----------------------------|--|----------------------------------|
| Rated Voltage (±10%) | 120V AC | |
| Watts (±10%) | 40W / 60W | |
| Amps | 40W: 0.33A / 60W: 0.50A | Amp = Watt. / Volt. |
| Power Factor | $\cos \geq 0.9$ | |
| Frequency | 50 / 60 Hz | |
| LED Service Life | 60,000 hrs* | *L70 at 55°C Ambient Temperature |
| Warranty | 1 year warranty without warranting lumen depreciation. | |

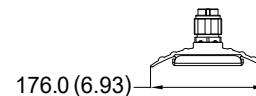
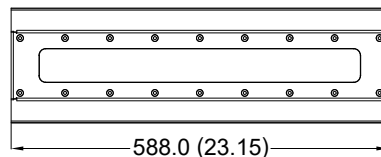
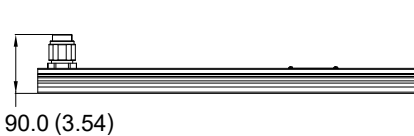
Mechanical:

| | |
|------------------------|-----------------|
| Enclosure | Aluminum Alloy |
| Glass | Tempered Glass |
| Cable Gland | Stainless Steel |
| Entrance Thread | 1 x M25 |

Optical:

| | |
|---------------------------|-----------------------------|
| Color of LED Light | 5000K (Cool White) |
| CRI | ≥ 70 |
| Beam Angle | X-116° / Y-114° |
| Lm / W (±10%) | 115 lm/w |
| Lumen (±10%) | 40W: 4600 lm / 60W: 6900 lm |

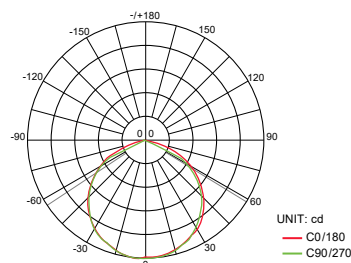
Dimension: In mm (inches)



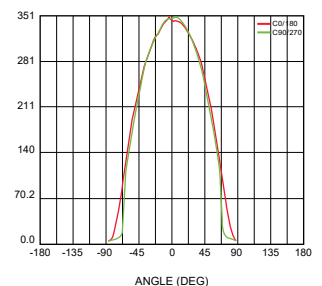
Optical Report:

COB test

Polar Luminous Intensity Distribution



Luminous Intensity Distribution Diagram



Mounting Option & Dimension : In mm (inches)

