

2/2 WAY PILOT OPERATED SOLENOID VALVE, G 1 1/4" ÷ G 2"

COMMON FEATURES

Media: water, oil, air

Media temperature: -10°C ÷ +90°C

Ambient temperature: -10°C ÷ +50°C

Body material: brass (CW617N EN 12165)

Operator material: stainless steel

Operator seal and diaphragm material: NBR

Silver shading ring as standard

Protection class: IP 65 (with connector and gasket)

Speed control screw as standard

OPTIONS

FKM seal, temperature max. 130°C (e.g. code D223DVK)

EPDM seal, temperature max. 120°C (e.g. code RD223DEK)

Electroless nickel plating treatment (e.g. code D222DVYK)

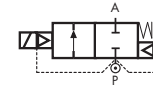
NPT connection on request, minimum batch may be required (e.g. code D223DBKN)

DIMENSIONS & WEIGHTS		D223	D224	D225	RD223	RD224	RD225
G connection	[ISO 228]	1 1/4"	1 1/2"	2"	1 1/4"	1 1/2"	2"
A	[mm]	140	140	168	140	140	168
B	[mm]	140	140	158	140	140	158
C	[mm]	96	96	112	96	96	112
D	[mm]	31	31	39	31	31	39
weight	[kg]	2.8	2.8	3.9	2.8	2.8	3.9

VALVE	nominal Ø	flow rate Kvs	OPD			COILS	
			min.	max. AC	max. DC	code	[Volts/Hz]
code	[mm]	[l/min]	[barg]	[barg]	[barg]	code	[Volts/Hz]
D223DBK	40	370	0.5	16	16	7250	24v DC
D224DBK	40	400	0.5	16	16	7200	24v 50/60Hz
D225DBJ	50	540	0.5	16	16	7400	110v 50Hz - 120v 60Hz
						7600	200v 50Hz - 220v 60Hz
						7700	230v 50Hz - 240v 60Hz

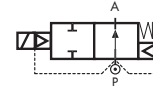
VALVE	nominal Ø	flow rate Kvs	OPD			COILS class 'H' only	
			min.	max. AC	max. DC	code	[Volts/Hz]
code	[mm]	[l/min]	[barg]	[barg]	[barg]	code	[Volts/Hz]
RD223DBK	40	370	0.5	16	16	7251	24v DC
RD224DBK	40	400	0.5	16	16	7201	24v 50/60Hz
RD225DBJ	50	540	0.5	16	16	7401	110v 50Hz - 120v 60Hz
						7601	200v 50Hz - 220v 60Hz
						7701	230v 50Hz - 240v 60Hz

TYPE: D223÷D225

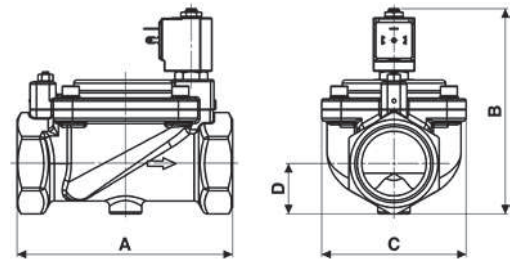


Normally Closed

TYPE: RD223÷RD225



Normally Open



Flow direction overseat 1 → 2

D223/224/225 - NBR seal, NC -

Coil power: AC 18v_A (holding)
AC 36v_A (inrush)
DC 14w

OPTIONS

Manual override (e.g. code D223DBKM)

For vacuum see TIS *55 01*

UL approved coils (e.g. code 725B)

D223/224/225 - NBR seal, NO -

Coil power: AC 18v_A (holding)
AC 36v_A (inrush)
DC 14w