

2022

## SINGLE POINT LOAD CELL " OFF CENTER "

Single point load cell specially designed for the weighing of platforms and bunkers.

Model 2022/2022-F



### Features

- Designed for off-center load
- Maximum platform size : 800 x 800 cm
- Material : Anodized aluminium alloy
- Protection: IP 64
- Easy to install
- Complies with OIML/R60 up to 3000d for scales in class III according to EN 45 501
- Cable length: 3m
- Available options (non exhaustive list) :
  - o ATEX intrinsic safety Ex II 1GD Ex ia IIC T6 or T4 Ga Ex ia IIIC T80 C Da
  - o high service temperature (150 °C)
  - o protection cover (option F)
  - o reinforced protection against corrosion

### Applications

The SENSY's load cell 2022 is perfectly designed to the following applications :

- Industrial scales and platforms, retail and computing scales, ...
- Medium hoppers size weighing
- Filling, packaging and batching applications

### Capacities

2022 : 100 - 150 - (200) - 300 - 500 kg  
Cover " F " in option

Specifications	0.1	0.03	C 3	
Accuracy class	0.1% F.S.	0.03% F.S.	3000 d OIML	-
Combined error	< ± 0.1	< ± 0.03	< ± 0.02	% F.S.
Linearity error	< ± 0.1	< ± 0.025	< ± 0.02	% F.S.
Repeatability error	< ± 0.03	< ± 0.015	< ± 0.01	% F.S.
Creep error over 30 min.	< ± 0.06	< ± 0.025	< ± 0.02	% F.S.
Zero shift after loading	< ± 0.015	< ± 0.0075	< ± 0.005	% F.S.
Reference temperature	23	23	23	C
Nominal temperature range	-10...+45	-10...+45	-10...+45	C
Service temperature range	-30...+70	-30...+70	-30...+70	C
Storage temperature range	-50...+85	-50...+85	-50...+85	C
Temperature coefficient of the sensitivity	< ± 0.05	< ± 0.015	< ± 0.009	% F.S./10 C
Temperature coefficient of zero signal	< ± 0.035	< ± 0.023	< ± 0.013	% F.S./10 C
Zero balance	± 0.02	± 0.02	± 0.02	mV/V
Sensitivity tolerance	< ± 0.3	< ± 0.2	< ± 0.1	%
Input resistance	352 ± 2	352 ± 2	352 ± 2	Ohm
Output resistance	352 ± 2	352 ± 2	352 ± 2	Ohm
Insulation resistance (50V)	> 5000	> 5000	> 5000	Megaohm
Reference excitation voltage	10	10	10	VDC
Nominal range of excitation voltage	3..12	3..12	3..12	VDC
Nominal sensitivity	2 ± 10%	2 ± 10%	2 ± 10%	mV/V
Safe load limit	150	150	150	% F.S.
Breaking load	>300	>300	>300	% F.S.
Static lateral force limit	100	100	100	% F.S.
Permissible dynamic loading	60	60	60	% F.S.

# LOAD CELL

model 2022

aluminium alloy

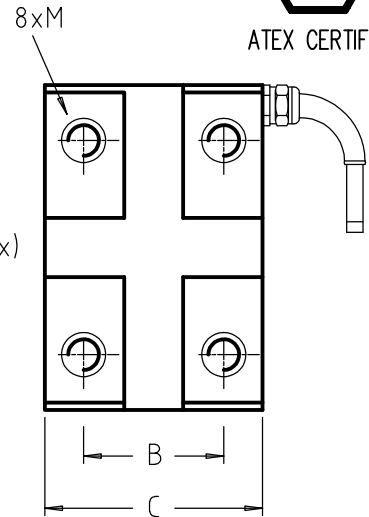
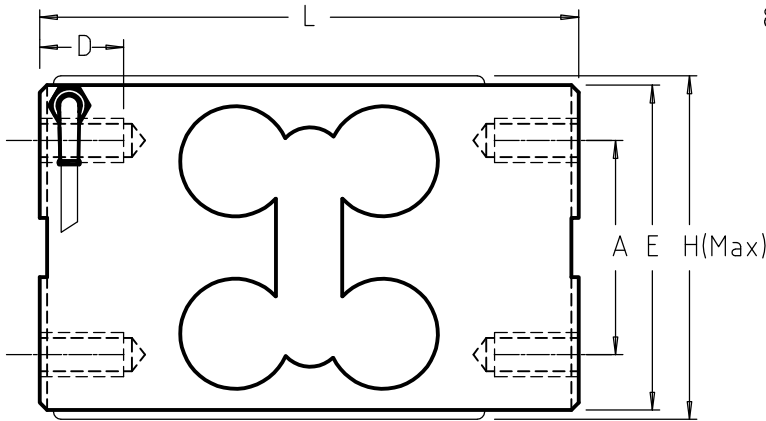
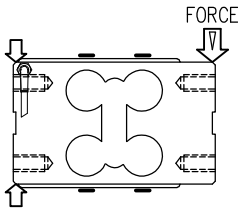
OFF-CENTER

Range 100–500 kg IP64

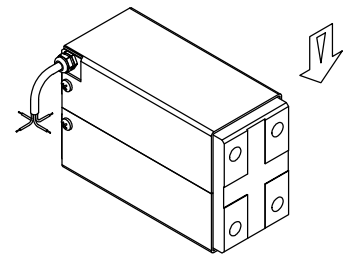
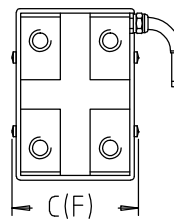
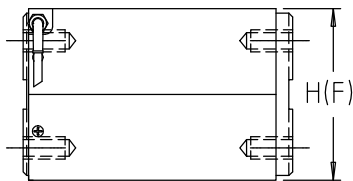
Cable length : 3 m



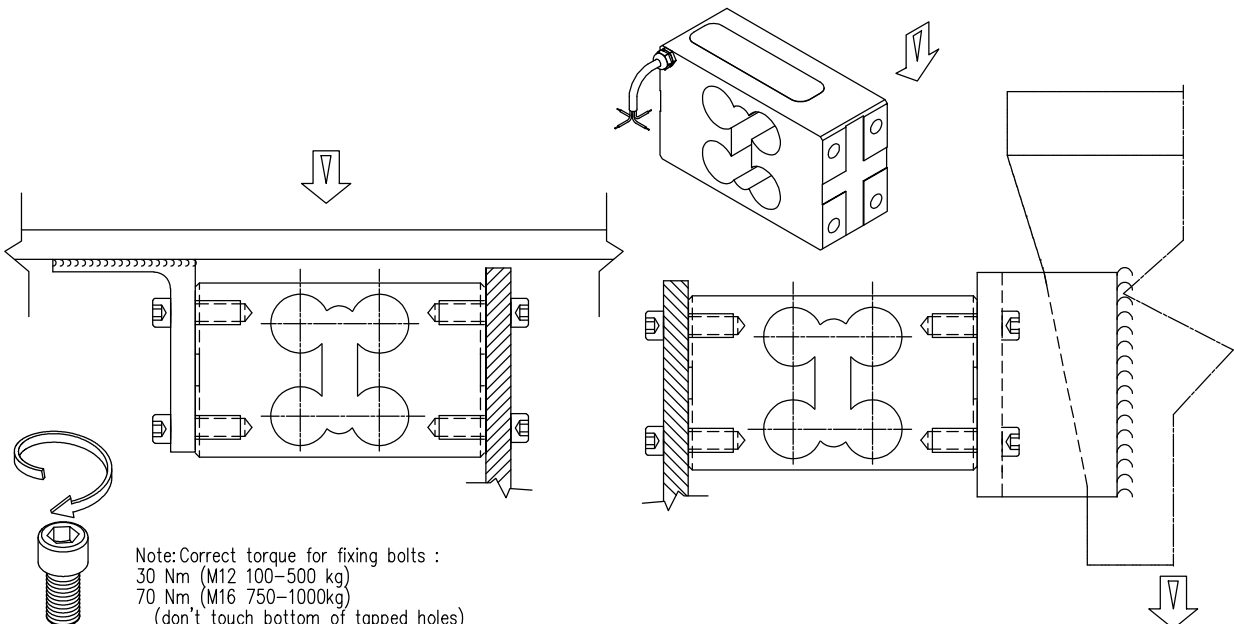
ATEX CERTIFIED



2022-F = COVER OPTION



CAPACITIES	A	B	C (F)	D	E	H (F)	L	M	MAX OFF-CENTER	Max.deflexion	Weight
100 – 500 kg	58	38	58 (69)	25	88	90 (96)	146	12	800x800	0.6 to 1 mm	1.5 kg



Note: Correct torque for fixing bolts :  
 30 Nm (M12 100–500 kg)  
 70 Nm (M16 750–1000kg)  
 (don't touch bottom of tapped holes)